

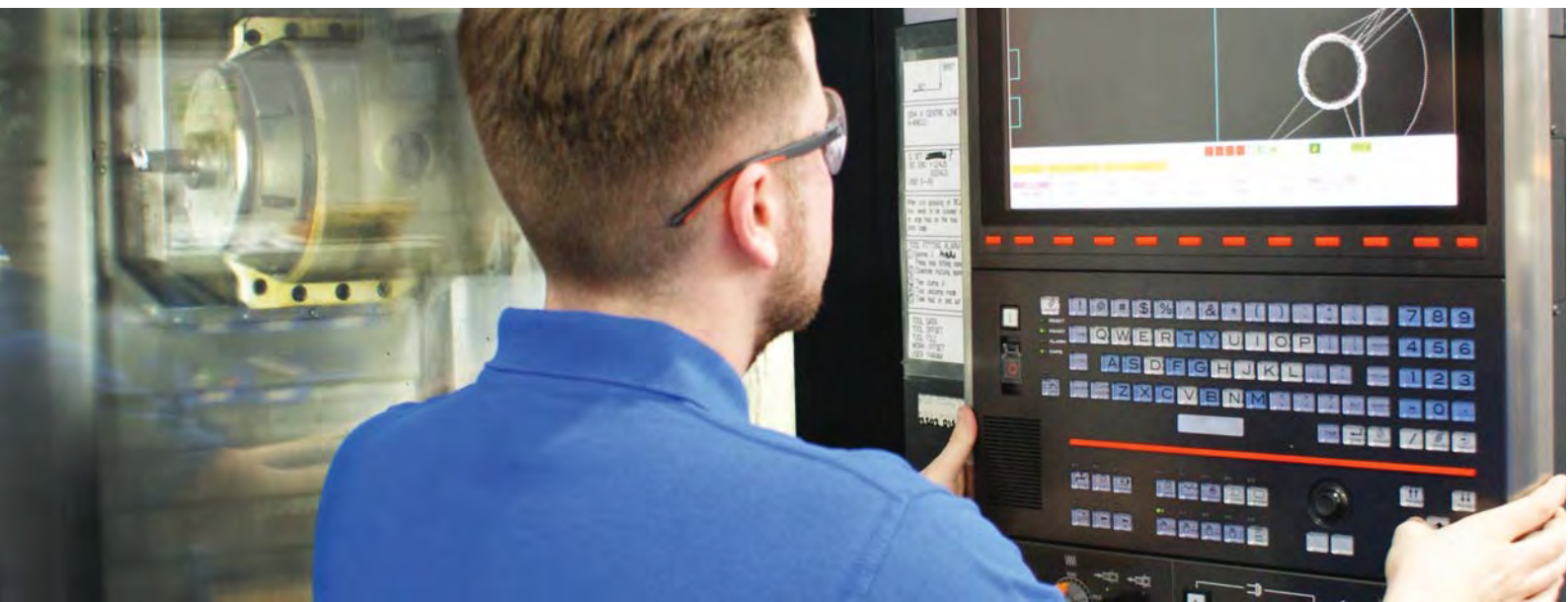
Kenard Engineering Co. Ltd

Dartford Plant List



Kenard Engineering Co. Ltd | Green Street Green Road, Dartford, Kent, DA1 1QE
T: 01322 421200, E: sales@kenard.co.uk. www.kenard.com

QUALITY | PRECISION | SERVICE



Turn/Milling Machining Centres - including integrated 5 axis



Mori Seiki SL 603

Designed for accuracy, rigidity and speed, this machine features high speed feed on all axis.

Basic specifications:

Max. turning diameter: 930 mm
Max. turning length: 2000 mm
Spindle RPM: 1500
Swing capacity: 1000 mm



Hitachi Seiki HT40G (x 2)

Horizontal lathe/turning machine. Basic specifications:

Max. turning diameter: 620 mm
Max. turning length: 1120 mm
Swing capacity: 1000 mm
Spindle speed: 20-2000 min-1
12 station turret head



Mazak Integrex i400 Matrix 2

A full 5-axis machining centre.

Basic specifications:

Max. machining diameter: 658 mm
Max. machining length: 1519 mm
72 position tool magazine and high pressure coolant



Hitachi Seiki HT30G

Horizontal lathe/turning machine. Basic specifications:

Max. turning diameter: 500 mm
Max. turning length: 600 mm
Swing capacity: 620 mm
Spindle speed: 20-2500 min-1
12 station turret head



Mori Seiki MT2500

State of the art turning/milling centre with 5 axis milling capability. Basic specifications:

Max. turning diameter: 550 mm
Max. turning length: 1528 mm
Swing capacity: 1000 mm
Supports 120 tools

Turning Centres, including Vertical Turning Centres



Doosan Puma 700 LM (x2)

A large capacity, high productivity CNC turning centre.

Basic specifications:

Max. turning diameter: 900 mm
Max. turning length: 3200 mm
Spindle RPM: 1500
Swing capacity: 1030 mm
High pressure coolant



Doosan Puma VCL VT900M

Hard-cutting, high precision vertical turning centre. Basic specifications:

Max. turning diameter: 900 mm
Max. turning length: 850 mm
High strength and rigidity



Doosan Puma 600

A large capacity, high productivity CNC turning centre with 12 position turret. Basic specifications:

Rapid traverse: 12/16m / min
Spindle bore: 152 mm
Swing capacity: 1030 mm
1650 mm Z Axis

Flexible Machining Centres



Mitsubishi M-H60E

A multi-pallet horizontal machining centre with seven pallets supporting up to seven separate fixtures. Offers true flexible machining 24/7. Basic specifications:

Max. machining envelope: 1000 mm x 800 mm x 800 mm
80 Tool ATC
Maximum spindle speed: 12000 RPM
Pallet change time: 20 seconds (chip to chip)



Tsugami FMA 5

A multi-pallet Flexible Machining Centre designed for high accuracy. Allows for continuous machining for two out of three shifts. Basic specifications:

Max. machining envelope: 500 mm x 500 mm x 500 mm
Supports 8 pallets
126 Tool ATC



Mitsubishi M-H5B

A multiple pallet magazine supporting up to 8 pallets. Continuous machining is aided by tool breakage detection. Basic specifications:

Maximum work piece size - 800 mm x 760 mm
120 Tool ATC
500 mm x 500 mm work piece probing
Rapid traverse 40m/min
4 Axis



Machining Centres



Fadal VMC 4020

A vertical machining centre with a 30 tool turret and Renishaw work probing. Basic specifications:
Table size: 1016 mm x 508 mm x 711 mm
Maximum spindle speed: 10,000 RPM
4 Axis



Doosan Mynx 750 (x2)

A flexible machining centre with a full 4th axis. Basic specifications:
Axis: (x) 1525 mm x (y) 762 mm x (z) 625 mm
Maximum spindle speed: 12,000 RPM
30 tool ATC

EDM Wire Erosion



Mitsubishi FA30V

This process is to NADCAP Aerospace standard. Basic specifications:
Stroke (X/Y/Z): 750 mm x 500 mm x 670 mm
Max. work piece: 1300 mm x 1000 mm x 670 mm
Max. work piece weight: 3000 kg

Inspection Equipment



DEA Scirocco

A 5 axis co-ordinate measuring machine. Basic specifications:
Stroke: (x) 1000 mm x (y) 1500 mm x (z) 800 mm



Ferranti Merlin 750

A 3-dimensional CMM co-ordinate measuring machine. Basic specifications:
Traverse: (x) 750 mm x (y) 750 mm x (z) 500 mm
Ferranti profile analysis software
SPC software



Etalon Derby 4.5.4

Used for fast dimensional measurement of components in the workshop. This intelligent measurement system automatically recognises geometric features, calculates dimensional data and shows the results geographically.



LK CMM G-90C

A vertical spindle with moving ceramic bridge CMM machine. The machine works on high efficiency air bearings and has a granite surface plate base with bonded straight edge. In common with the Merlin, this machine is automated but benefits from a larger working surface. Basic specifications:
Working surface: 100 mm x 700 mm x 600 mm

Miscellaneous Tools



Jones and Shipman Cylindrical Grinder

Model: 1307
Capacity: 14" diameter



CEMB Balancing Machine

Enables easy calibration and highly accurate measurements, which is achieved by inputting the geometrical dimensions. After a single spin, independent of the rotation speed, the machine automatically displays the value gram in ounces and the angular imbalance for both planes.



Microbore EC011

The microset tool pre-setting unit serves as a measuring unit for the operation of drilling, milling and turning with their functional dimensions. The machine gives a readout with linear and rotary encoders. It can also send the data recorded through a post processor function to many of our machine tools.



Wanhao 3D Printer

Allows us to produce concept models to support the estimating and quotation process. 3D printed models provide a real object that can be analysed to determine how to design the part for manufacture. 3D printed masks allow us to create very precisely fitted covers ready for spraying or coating.



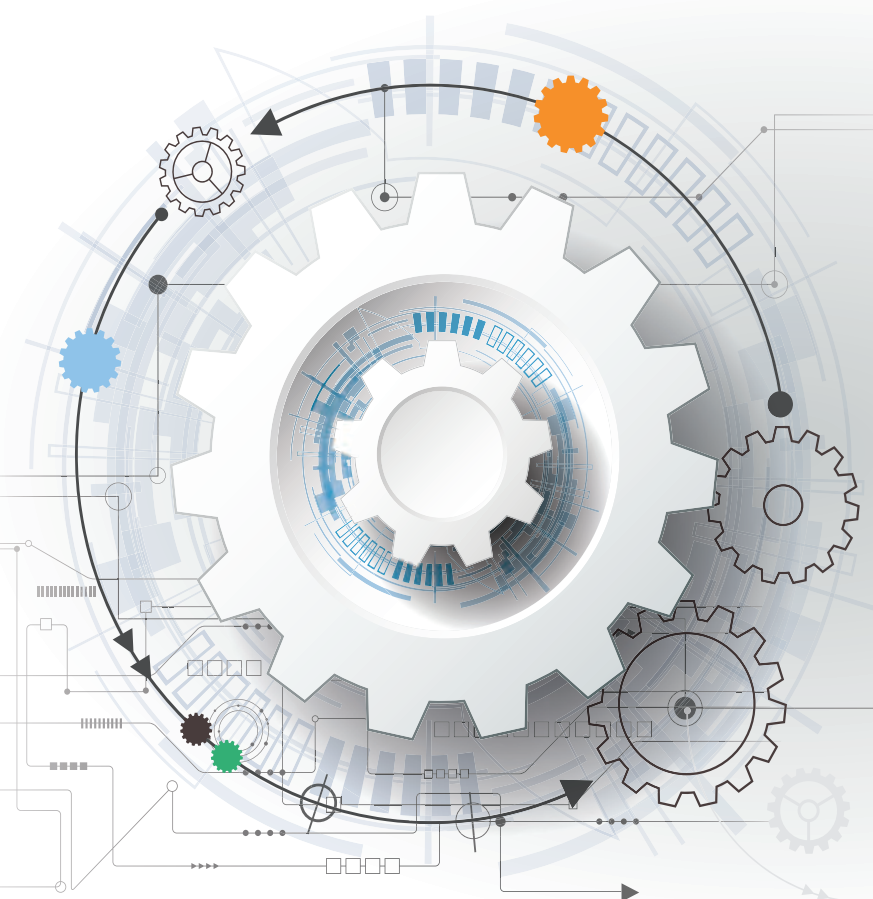
Kemet Diamond Flat Lapping/Polishing Machine

The Kemet 36 can lap parts up to 368mm dia (3 ring) or 322mm dia (4 ring). It produces optically flat surfaces with high precision surface finish. It's suitable for large parts or large volume production.



Accreditations

AS9100 Rev D, BS EN ISO 9001:2015, BS EN 9100:2009



About Us

The Kenard Group is a privately owned subcontract precision engineering service provider, with over fifty years experience as an established and trusted tier one supplier to some of the world's most prestigious OEMs.

Our two manufacturing divisions, based in Dartford and Tewkesbury, offer high value precision engineering capabilities that are increasingly making the Kenard Group a critical part in the supply chain. Our full service offering extends from precision machining to complex project management of assemblies, encompassing a wide range of disciplines such as non-destructive testing, heat treatment, chemical processing, painting and assembly. With a proven track record of competing globally, we operate with the latest best practice and applications in engineering at our core.

Kenard Engineering Co. Ltd
Green Street Green Road
Dartford
Kent
DA1 1QE

Tel: 01322 421200
Fax: 01322 421220

Kenard Engineering (Tewkesbury) Ltd
Gannaway Lane
Tewkesbury
Gloucestershire
GL20 8FD

Tel: 01684 271400
Fax: 01684 271417

Seiki Systems Ltd
Olivier House
18 Marine Parade
Brighton
BN2 1TL

Tel: 01273 666999
www.seikisystems.co.uk

sales@kenard.co.uk

www.kenard.com